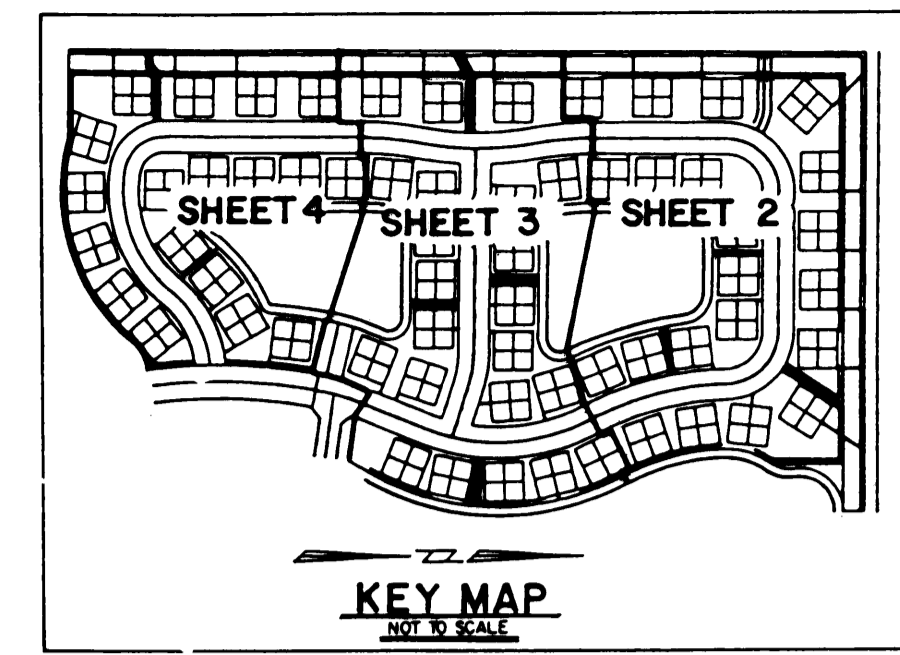


TYPICAL LOT LAYOUT  
N.T.S.

# A PLAT OF PARCEL 62-A AT THE MEADOWS

BEING PLAT NO. 57 OF MARTIN DOWNS A P.U.D. ALSO BEING A REPLAT OF  
PARCEL 62 AT THE MEADOWS BEING PLAT NO. 54 OF MARTIN DOWNS A P.U.D.  
AS RECORDED IN P.B. 12, PG. 17, PUBLIC RECORDS OF MARTIN COUNTY, LYING IN  
SECTION 12, TOWNSHIP 38 SOUTH, RANGE 40 EAST, MARTIN COUNTY, FLORIDA.  
SHEET 4 OF 4  
OCTOBER, 1990

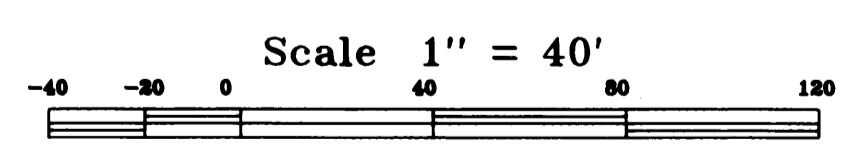
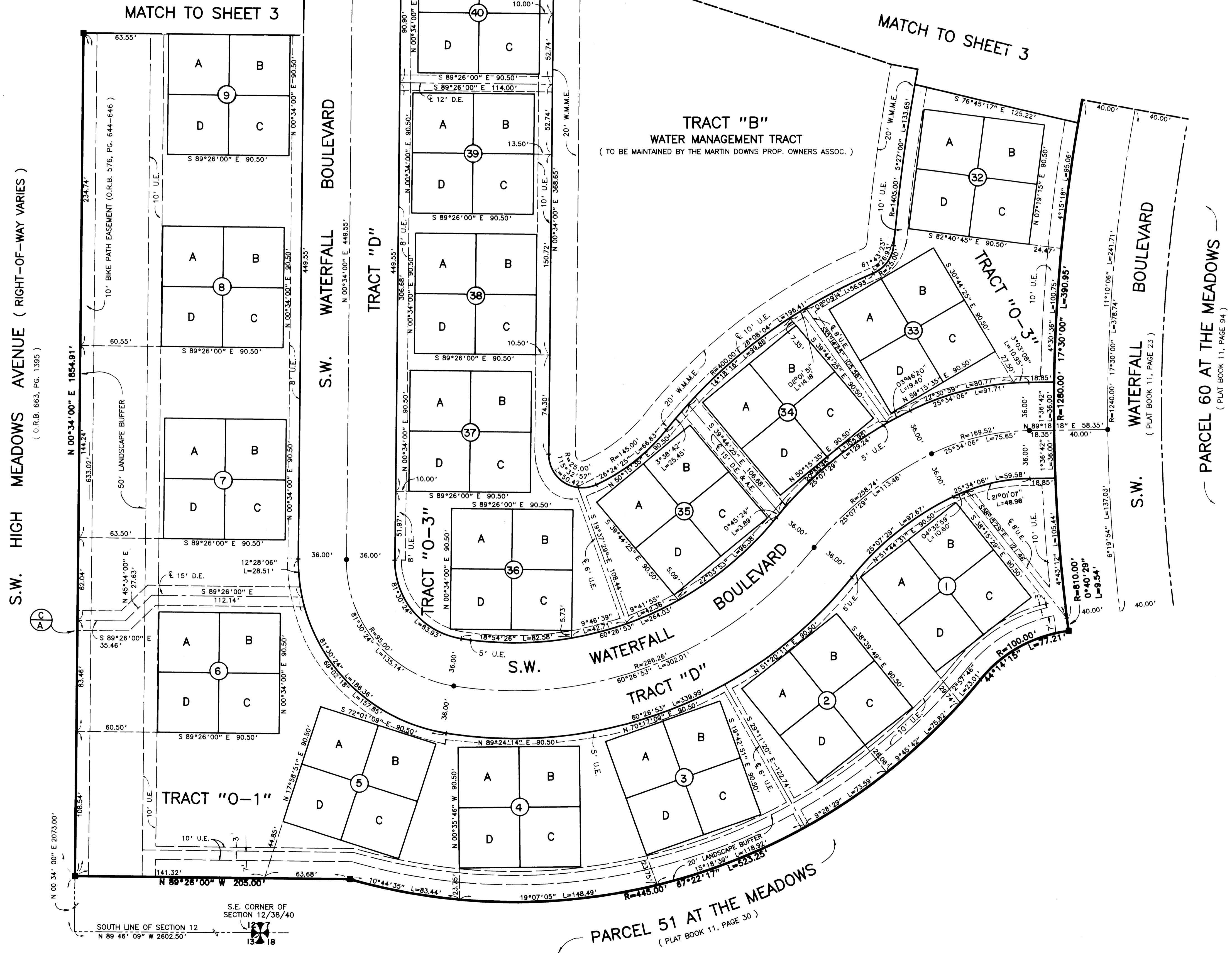


I, MARSHA STILLER, CLERK OF THE CIRCUIT COURT OF MARTIN COUNTY, FLORIDA, HEREBY CERTIFY THAT THIS PLAT WAS FILED FOR RECORD IN PLAT BOOK 12, PAGE 17, MARTIN COUNTY, FLORIDA, PUBLIC RECORDS, THIS 4<sup>TH</sup> DAY OF February, A.D. 19 91.

MARSHA STILLER, CLERK OF CIRCUIT COURT MARTIN COUNTY, FLORIDA

By: \_\_\_\_\_ DEPUTY CLERK

FILE NO. 866872



Landmark Surveying & Mapping Inc.  
1850 FOREST HILL BOULEVARD  
PH. (407)433-5405 SUITE 100 W.P.B. FLORIDA

**PARCEL 62-A AT THE MEADOWS**